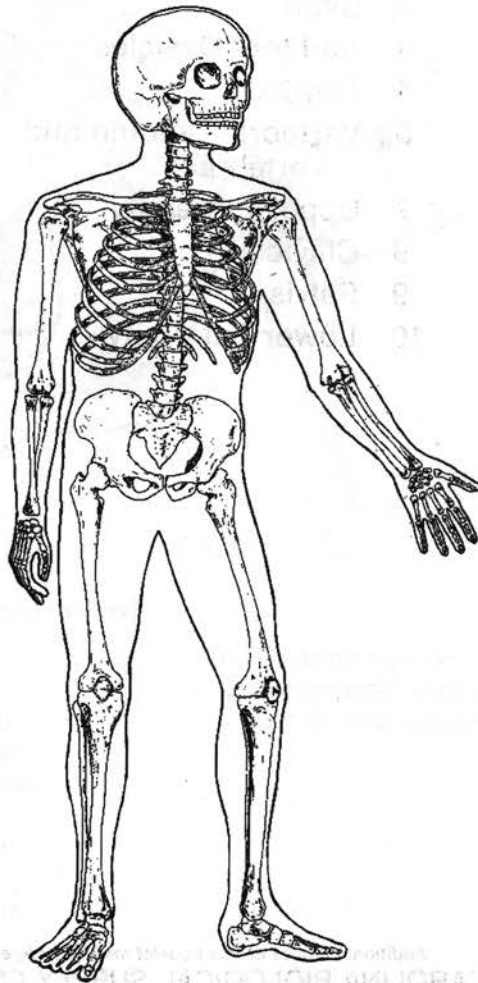




CAROLINATM
Teamed with Teachers

Human Anatomy Manual

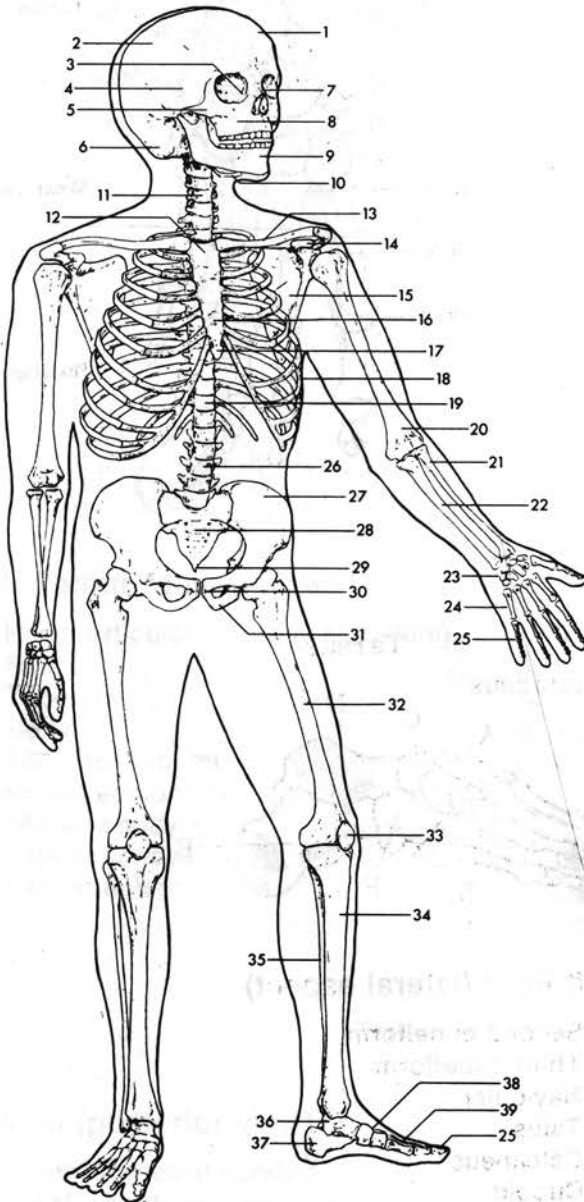
The Skeleton



CAROLINA BIOLOGICAL SUPPLY COMPANY
4550 Lenoir Street, Raleigh, NC 27606
Phone: (919) 876-1000

HUMAN SKELETON 1

Survey



1. Frontal
2. Parietal
3. Ethmoid
4. Temporal
5. Zygomatic
6. Occipital
7. Nasal
8. Maxilla
9. Mandible
10. Hyoid
11. Cervical vertebra (7)
12. Manubrium
13. Clavicle
14. Coracoid
15. Scapula
16. Sternum
17. Xiphoid process
18. Ribs
19. Thoracic vertebra (12)
20. Humerus
21. Radius
22. Ulna
23. Carpals
24. Metacarpals
25. Phalanges
26. Lumbar vertebra (5)
27. Ilium
28. Sacrum (5)
29. Coccyx (3-5)
30. Pubis
31. Ischium
32. Femur
33. Patella
34. Tibia
35. Fibula
36. Talus
37. Calcaneus
38. Tarsals
39. Metatarsals

Reproduced from Bioreview® Sheet 42-6730 Human Skeleton 1. Survey.

Carolina Biological Supply Company

2700 York Road, Burlington, North Carolina 27215

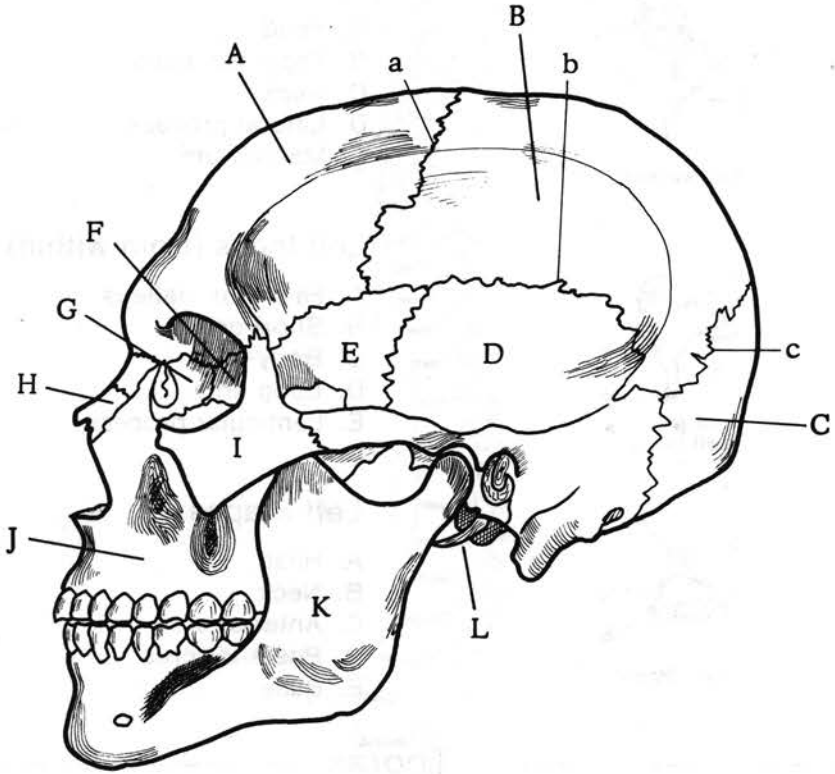
CB340279711

Contents

- 3 Skull
- 4 Auditory Ossicles
- 4 Thorax
- 5 Vertebral Column and
Vertebrae
- 7 Upper Extremity
- 9 Clavicle
- 9 Pelvis
- 10 Lower Extremity

Additional copies of this booklet may be ordered from
CAROLINA BIOLOGICAL SUPPLY COMPANY
BURLINGTON, N. C. 27215 GLADSTONE, OR. 97027
45-6610 Human Anatomy Manual
Printed in U.S.A. © 1977 Carolina Biological Supply Company

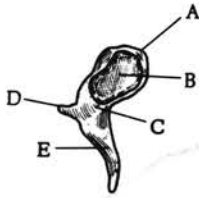
Skull



Skull (lateral view)

- | | |
|--------------------|---------------------|
| A. Frontal | a. Coronal suture |
| B. Parietal | b. Squamosal suture |
| C. Occipital | c. Lamboidal suture |
| D. Temporal | |
| E. Sphenoidal | |
| F. Ethmoid | |
| G. Lacrimal | |
| H. Nasal | |
| I. Zygomatic | |
| J. Maxilla | |
| K. Mandible | |
| L. Styloid process | |

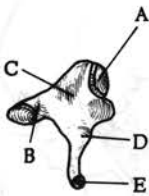
Auditory Ossicles



Left Malleus

Left Malleus (from behind)

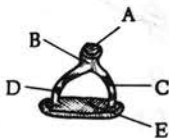
- A. Head
- B. Facet for incus
- C. Neck
- D. Lateral process
- E. Manubrium



Left Incus

Left Incus (from within)

- A. Facet for malleus
- B. Short crus
- C. Body
- D. Long crus
- E. Lenticular process

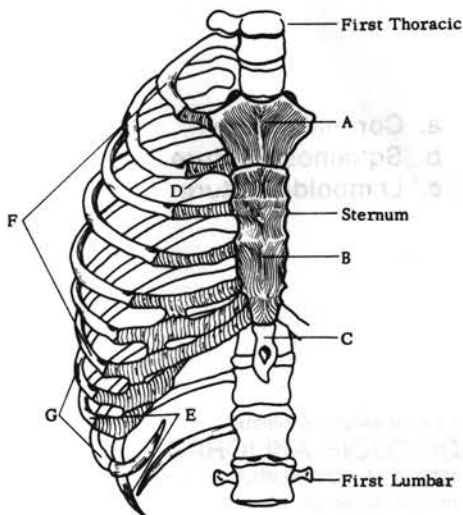


Left Stapes

Left Stapes

- A. Head
- B. Neck
- C. Anterior crus
- D. Posterior crus
- E. Base

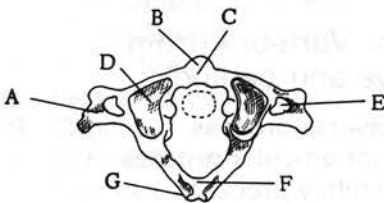
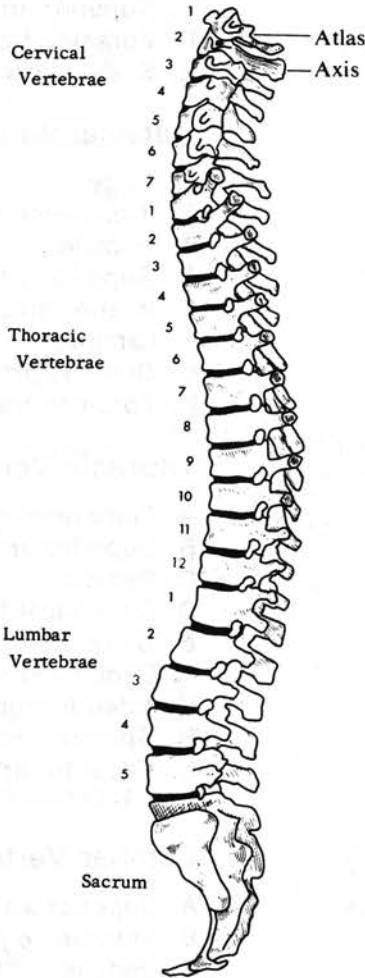
Thorax



Thorax (frontal view)

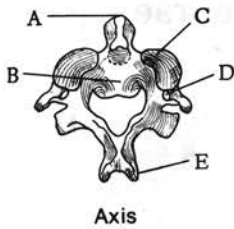
- A. Manubrium
- B. Body
- C. Xiphoid process
- D. Costal cartilage
- E. False ribs
- F. Vertebrosteral or true ribs
- G. Vertebrocostal ribs

Vertebral Column and Vertebrae



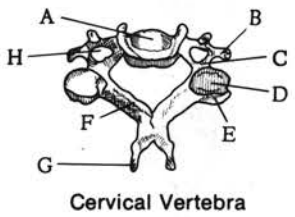
Atlas (first cervical vertebra)

- A. Transverse process
- B. Anterior tubercle
- C. Anterior arch
- D. Superior articular surface
- E. Foramen transversarium
- F. Posterior arch
- G. Posterior tubercle



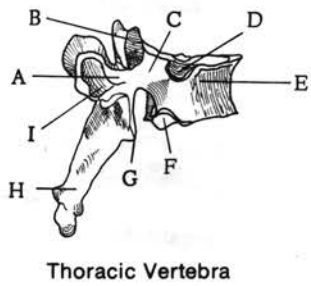
Axis (second cervical vertebra)

- A. Odontoid process
- B. Body
- C. Superior articular surface
- D. Foramen transversarium
- E. Spinous process



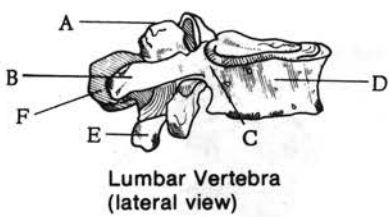
Cervical Vertebra

- A. Body
- B. Transverse process
- C. Pedicle
- D. Superior articular process
- E. Inferior articular process
- F. Lamina
- G. Spinous process
- H. Foramen transversarium



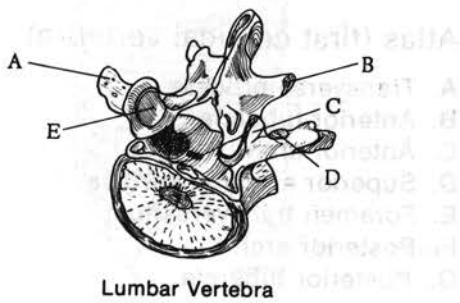
Thoracic Vertebra

- A. Transverse process
- B. Superior articular process
- C. Pedicle
- D. Demi-facet for head of rib
- E. Body
- F. Demi-facet for head of rib
- G. Inferior articular process
- H. Spinous process
- I. Facet for articular part of tubercle of rib



Lumbar Vertebra (lateral view)

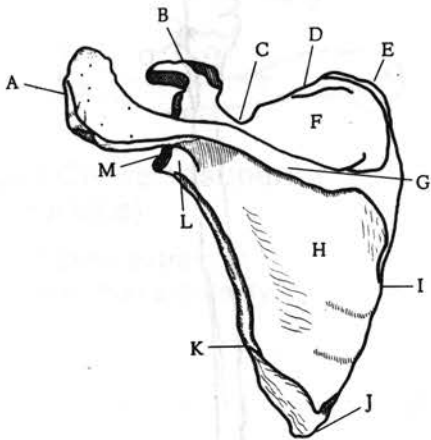
- A. Superior articular process
- B. Transverse process
- C. Pedicle
- D. Body
- E. Inferior articular process
- F. Spinous process



Lumbar Vertebra (from above and behind)

- A. Transverse process
- B. Inferior articular process
- C. Mammillary process
- D. Accessory process
- E. Superior articular process

Upper Extremity

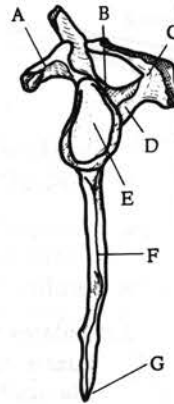


Left Scapula (dorsal view)

- A. Acromion
- B. Coracoid process
- C. Scapular notch
- D. Superior border
- E. Medial angle
- F. Supraspinatus fossa
- G. Spine
- H. Infraspinatus fossa
- I. Vertebral border
- J. Inferior angle
- K. Axillary border
- L. Neck of scapula
- M. Lateral angle

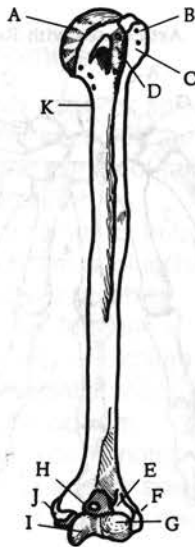
Left Humerus (anterior view)

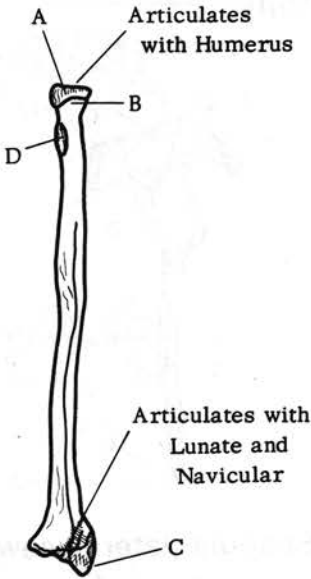
- A. Head (articulates with glenoid cavity of scapula)
- B. Greater tubercle
- C. Crest of greater tubercle
- D. Intertubercular groove
- E. Radial fossa
- F. Lateral epicondyle
- G. Capitulum
- H. Coronoid fossa
- I. Trochlea
- J. Medial epicondyle
- K. Surgical neck



Left Scapula (lateral view)

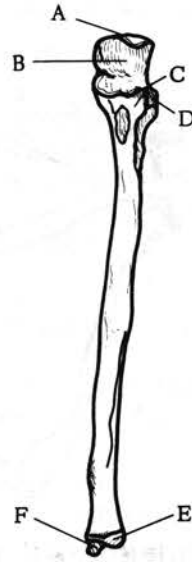
- A. Coracoid
- B. Supraglenoid tubercle
- C. Acromion
- D. Spine
- E. Glenoid cavity
- F. Axillary border
- G. Inferior angle





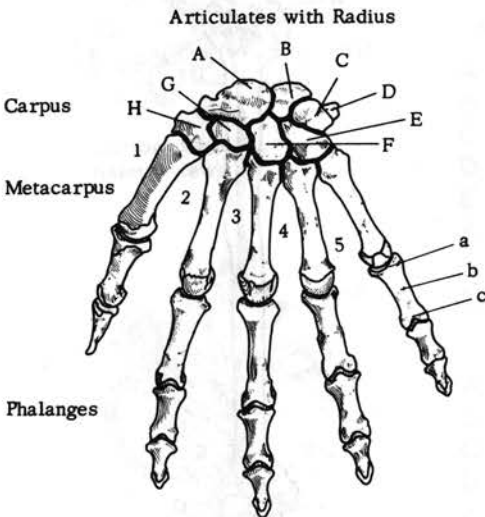
Left Radius (anterior aspect)

- A. Head
- B. Neck
- C. Styloid process
- D. Radial tuberosity



Left Ulna (anterior aspect)

- A. Olecranon
- B. Semilunar notch (articulates with humerus)
- C. Coronoid process
- D. Radial notch
- E. Articulates with radius
- F. Styloid process



Left Hand (dorsal surface)

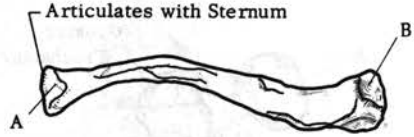
- A. Navicular
 - B. Lunate
 - C. Triangular
 - D. Pisiform
 - E. Hamate
 - F. Capitate
 - G. Lesser multangular
 - H. Greater multangular
- a. Base
 - b. Body
 - c. Head

Clavicle



Left Clavicle (superior surface)

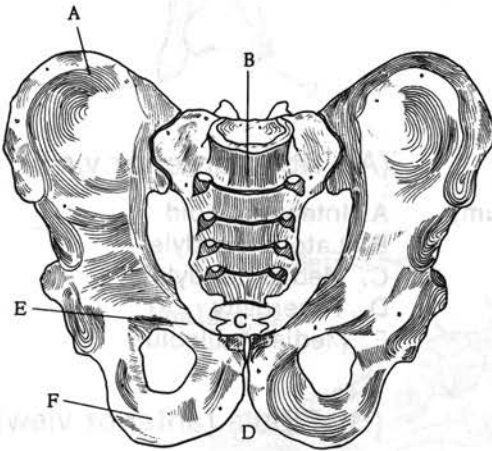
- A. Sternal extremity
- B. Acromial extremity



Left Clavicle (inferior surface)

- A. Articulates with cartilage of first rib
- B. Articulates with acromion of scapula

Pelvis

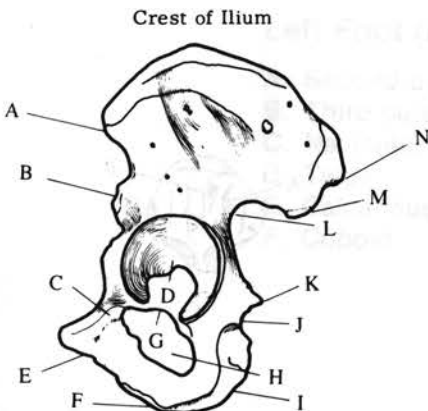


Pelvis

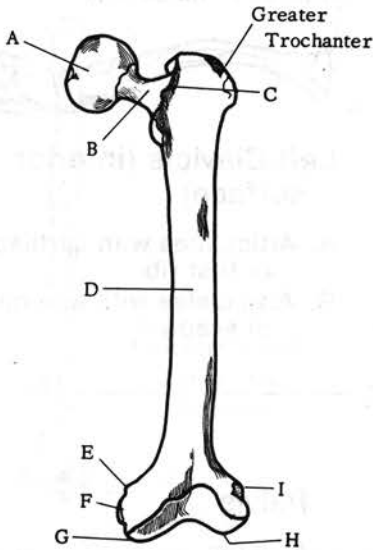
- A. Ilium
- B. Sacrum
- C. Coccyx
- D. Pubic arch
- E. Pubis
- F. Ischium

Left Innominate

- A. Anterior superior spine
- B. Anterior inferior spine
- C. Superior ramus of pubis
- D. Acetabulum
- E. Inferior ramus of pubis
- F. Inferior ramus of ischium
- G. Acetabular notch
- H. Obturator foramen
- I. Tuberosity of ischium
- J. Lesser sciatic notch
- K. Spine of ischium
- L. Greater sciatic notch
- M. Posterior inferior spine
- N. Posterior superior spine

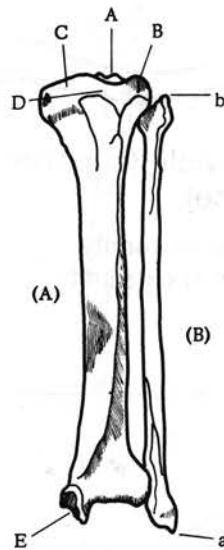


Lower Extremity



Left Femur (dorsal view)

- A. Head (articulates with acetabulum)
- B. Neck
- C. Tubercle
- D. Body
- E. Adductor tubercle
- F. Medial epicondyle
- G. Medial condyle
- H. Lateral condyle
- I. Lateral epicondyle



(A) Tibia (anterior view)

- A. Intercondyloid
- B. Lateral condyle
- C. Medial condyle
- D. Tuberosity
- E. Medial malleolus

(B) Fibula (anterior view)

- a. Lateral malleolus
- b. Styloid process

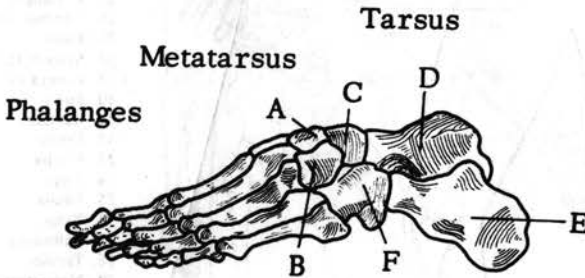
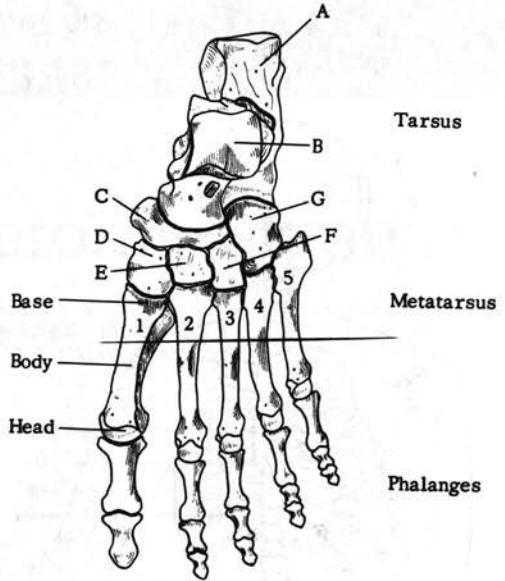
Patella (posterior view)

- A. Facet for medial condyle
- B. Facet for articulation with lateral condyle of femur



Left Foot (dorsal surface)

- A. Calcaneus
- B. Talus
- C. Navicular
- D. First cuneiform
- E. Second cuneiform
- F. Third cuneiform
- G. Cuboid



Left Foot (lateral aspect)

- A. Second cuneiform
- B. Third cuneiform
- C. Navicular
- D. Talus
- E. Calcaneus
- F. Cuboid